

OPERATIONS

RANKING AND HELMET IDENTIFICATION



A review of the NSW Rural Fire Service ranking and helmet identification standard has been undertaken to establish a consistent approach for all members across the State. The following standards have been approved by the Commissioner.

The ranking system depicted on the centre page will be incorporated into Service Standard 1.2.1 Ranking and Insignia. The helmets depicted on the centre page will be incorporated into Service Standard 5.1.5 Protective Clothing. Details of the reflective markings and graphics are shown on the following page.

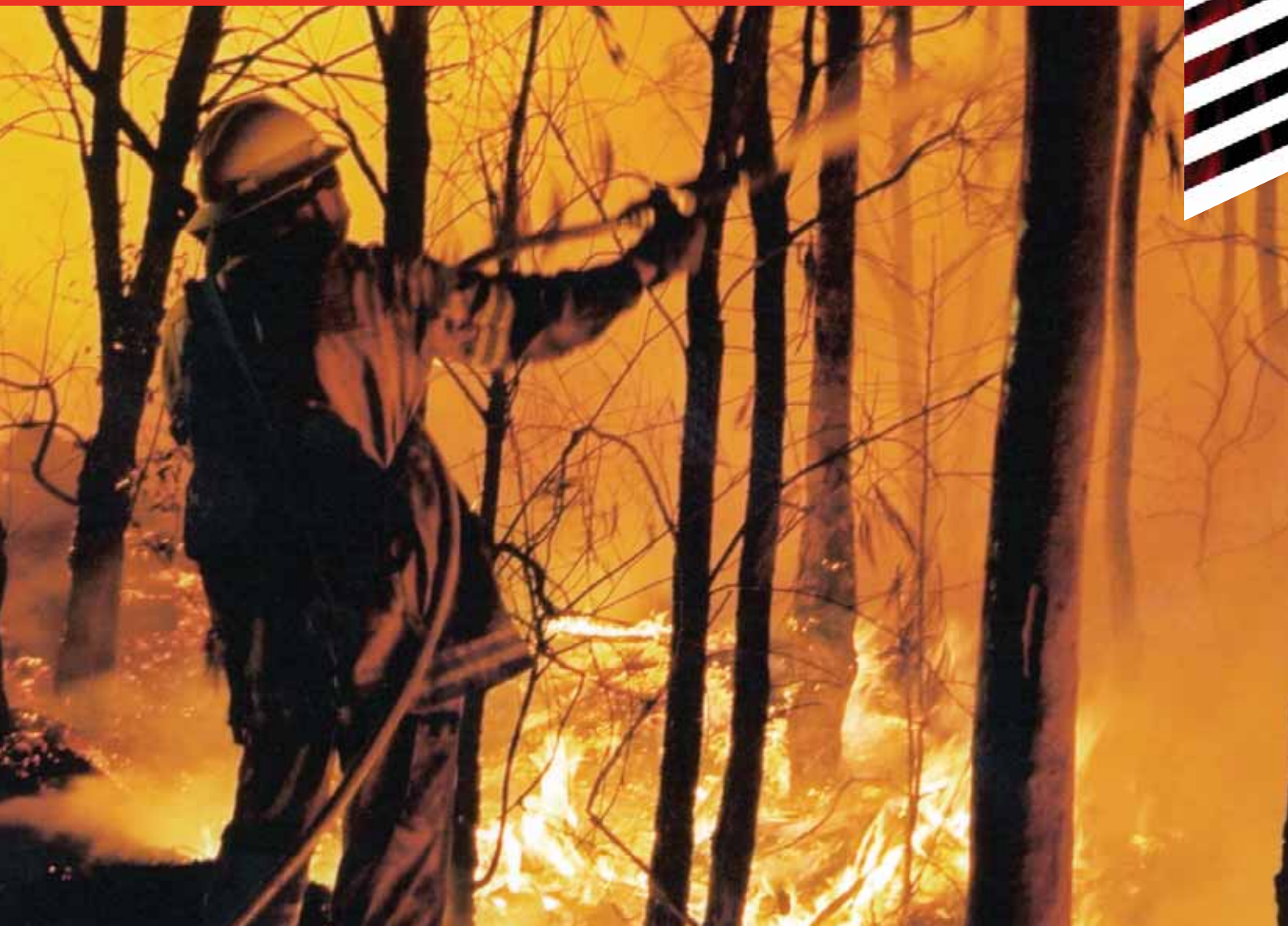
There will be a change to the reflective markings on new helmets issued. Both bushfire and structural firefighting helmets will be supplied with yellow fluorescent and retroreflective tape 15mm wide to the base of the helmets in accordance with AS 1801:1997 and AS 4067:2004 and this tape is not to be removed or obscured. The standard helmet kit is to be affixed above the yellow tape.

Names on helmets are optional but if used, the name shall be placed centrally across the back of the helmet as low to the base as possible. Names shall be the Surname (Last Name) only in Helvetica Narrow Bold 25mm high x maximum 140mm long in reflective lettering 3M 680 CR or equivalent. (Black lettering for White, Orange and Yellow helmets, White lettering for Red, Black, Blue and Purple helmets and Green lettering for Cadets).

Apart from the markings noted above NO other markings shall appear on RFS helmets.

To assist in achieving this standard the Rural Fire Service Association (RFSA) has offered to facilitate the production of the "Names" at \$5.00 each – see attached form or the RFSA website at www.rfsa.org.au

Chief Superintendent Alan Brinkworth
Manager Operations, Policy and Standards.





NSW RURAL FIRE SERVICE

RANKING CHART

NSW RURAL FIRE SERVICE

BUSHFIRE HELMETS



Commissioner	Assistant Commissioner	Chief Superintendent	Superintendent	Inspector	Commissioner	Assistant Commissioner	Chief Superintendent	Superintendent	Inspector
Group Captain	Deputy Group Captain	Captain	Senior Deputy Captain	Deputy Captain	Group Captain	Deputy Group Captain	Captain	Senior Deputy Captain	Deputy Captain
Member	Communications Captain	Communications Senior Deputy Captain	Communications Deputy Captain	Communications Member	Member	Communications Captain	Communications Senior Deputy Captain	Communications Deputy Captain	Communications Member
Catering Captain	Catering Senior Deputy Captain	Catering Deputy Captain	Catering Member	Chaplain	Catering Captain	Catering Senior Deputy Captain	Catering Deputy Captain	Catering Member	Chaplain
Cadet Co-ordinator	Cadet Senior Deputy Co-ordinator	Cadet Instructor	Adult Cadet Member		Cadet Co-ordinator	Cadet Senior Deputy Co-ordinator	Cadet Instructor	Adult Cadet Member	Fire Investigation
Cadet Captain (Green)	Cadet Senior Deputy Captain (Green)	Cadet Deputy Captain (Green)	Cadet (Green)		RFS Media Officer	RFS Media Liaison	Trainee	Training Instructor	Surname Back of Helmet

Markings apply to bushfire and structural firefighting helmets

OPERATIONAL HELMETS

RANK/POSITION	COLOUR	REFLECTIVE MARKING/GRAPHIC
Trainee	White	25mm Blue band around base
Firefighter including Communications and Catering	White	25mm White band around base
Deputy Captain including Communications and Catering	White	2 x 10mm Red stripes over crown and 25mm Red band around base
Senior Deputy Captain including Communications and Catering	Red	2 x 10mm White stripes over crown and 25mm White band around base
Captain including Communications and Catering	Red	25mm Red band around base
Deputy Group Captain	Orange	2 x 10mm White stripes over crown and 25mm White band around base
Group Captain	Orange	25mm White band around base
Inspector/Deputy Fire Control Officer	Orange	I in 50mm Black lettering to each side and 25mm Orange band around base
Superintendent/Fire Control Officer	Orange	S in 50mm Black lettering to each side and 25mm Orange band around base
Chief Superintendent	Black	CS in 50mm White lettering to each side, 2 x 10mm White stripes over crown and 25mm White band around base
Assistant Commissioner	Black	AC in 50mm White lettering to each side and 25mm White band around base
Commissioner	Black	C in 50mm White lettering to each side

NON-OPERATIONAL HELMETS

RANK/POSITION	COLOUR	REFLECTIVE MARKING/GRAPHIC
Chaplain	Purple	† in 50mm White and CHAPLAIN in 25mm White lettering to each side
Fire Investigation	Blue	FI in 50mm White lettering to each side
Training Instructor	Blue	INSTRUCTOR in 25mm White lettering to each side
Media Officer	Yellow	MEDIA OFFICER in 25mm Black lettering to each side and 2 x 10mm Black stripes over crown and 25mm Black band around base
Media Liaison	Yellow	MEDIA LIAISON in 25mm Black lettering to each side
Commercial Media Personnel	Yellow	MEDIA in 25mm black lettering to each side but having no RFS logo

CADET HELMETS

RANK/POSITION	COLOUR	REFLECTIVE MARKING/GRAPHIC
Cadet Recruit	White	CADETS in 25mm Green lettering to each side and 25mm Green band around base
Cadet	White	CADETS in 25mm Green lettering to each side and 25mm Green band around base
Cadet Deputy Captain	White	CADETS in 25mm Green lettering to each side and 25mm Green band around base
Cadet Senior Deputy Captain	White	CADETS in 25mm Green lettering to each side and 25mm Green band around base
Cadet Captain	White	CADETS in 25mm Green lettering to each side and 25mm Green band around base
Cadet Instructor	White	CADET INSTRUCTOR in 25mm Green lettering to each side and 25mm Green band around base
Cadet Coordinator and Cadet Deputy Coordinator	White	CADET COORDINATOR in 25mm Green lettering to each side and 25mm Green band around base

NAMES on helmets are optional – if used the name shall be placed centrally across the back as low to the base as possible.

Names shall be the Surname (Last Name) only in Helvetica Narrow Bold 25mm high x maximum 140mm long in reflective lettering 3M 680 CR or equivalent.

Black lettering for White, Orange and Yellow helmets, White lettering for Red, Black, Blue and Purple helmets and Green lettering for Cadets. Apart from the markings noted above no other markings shall appear on RFS helmets.

